

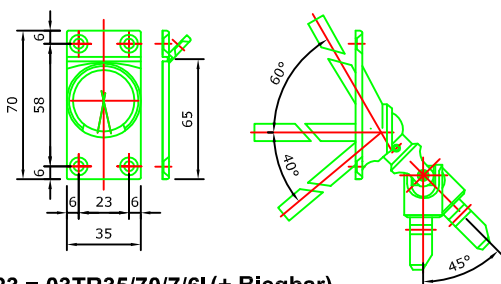
DURCHFÜHRUNG FÜR MONOBLOC

= 6 Kant / 7 mm / Länge 500 mm (ohne Schrauben geliefert)
Für Getriebe N°9 - 10

BIEGBAR DURCHFÜHRUNG INOX

Senkschrauben 4x20 mm Art. 16VISPA4/20

N°23

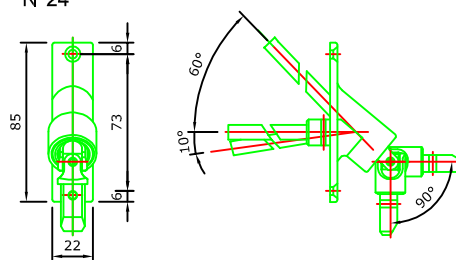


N°23 = 03TR35/70/7/6I (+ Biegbar)

DURCHFÜHRUNG ZAMAC 90°

Senkschrauben 4x20 mm Art. 16VISPA4/20

N°24

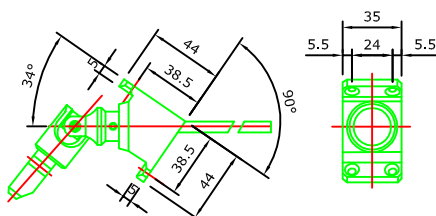


N°24 = 03 TR90/22/7/6Z

ECKWINKELDURCHFÜHRUNG PVC

Senkschrauben 4x20 mm Art. 16VISPA4/20

N°26 / N°27

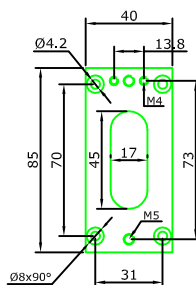


N°26 = 03TRANG7/6BL
N°27 = 03TRANG7/6GR

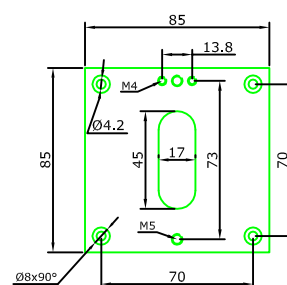
UNTERLAGPLATTEN NUR FÜR DURCHFÜHRUNG ZAMAC 90° - N°24

N°28

N°29



N°28 = 03PLA40/85



N°29 = 03PLA85/85

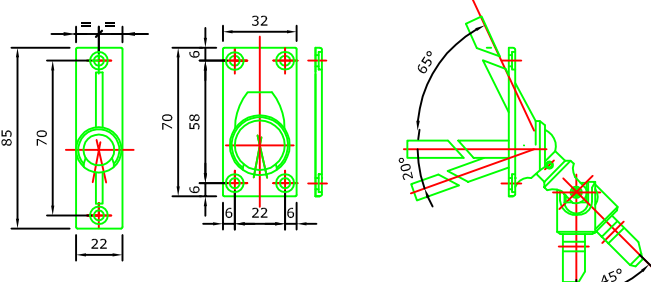
DURCHFÜHRUNG PVC

N°42 / N°43 Flachkopfschrauben 5 x 20 mm Art. 16VISPATB5/20

N°46 / N°47 Flachkopfschrauben 4 x 20 mm Art. 16VISPATB4/20

N°42 / N°43

N°46 / N°47

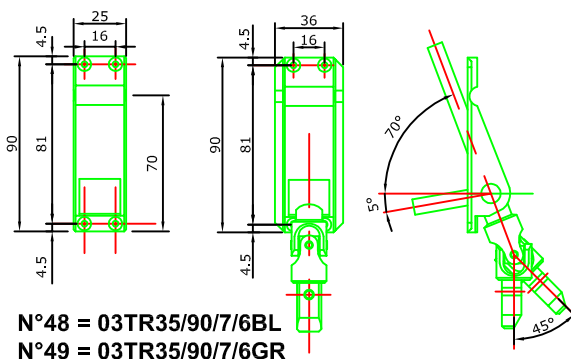


N°42 = 03TR22/85/7/6BL N°46 = 03TR32/70/7/6BL
N°43 = 03TR22/85/7/6GR N°47 = 03TR32/70/7/6GR

DURCHFÜHRUNG PVC (Zum Abkröpfen)

Flachkopfschrauben 3.5 x 20 mm Art. 16VISPATB3.5/20

N°48 / N°49



N°48 = 03TR35/90/7/6BL
N°49 = 03TR35/90/7/6GR